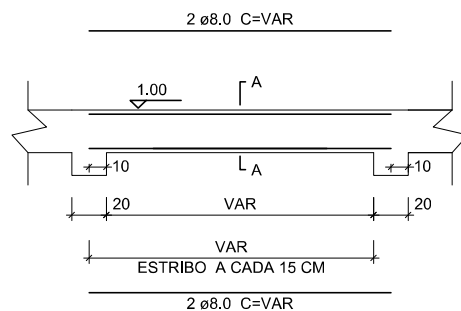
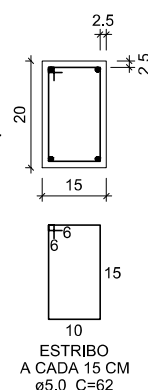


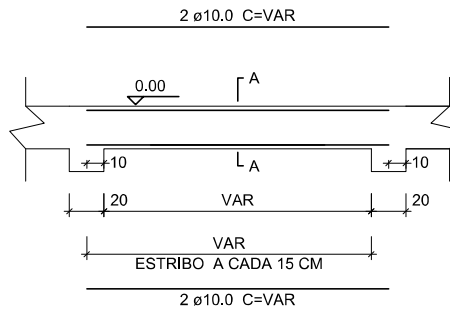
# VIGA SUPERIOR



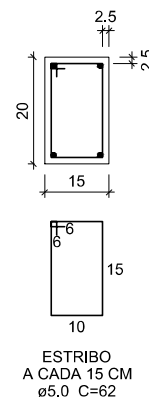
# SEÇÃO A-A



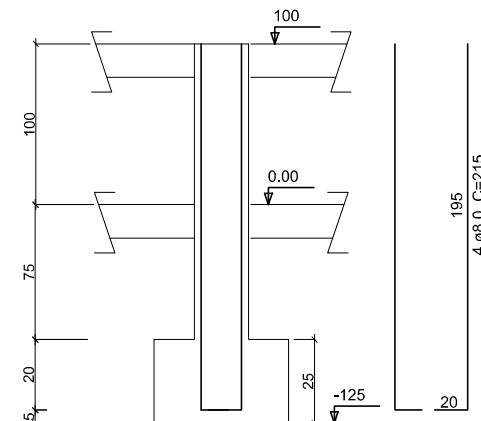
# VIGA BALDRAME



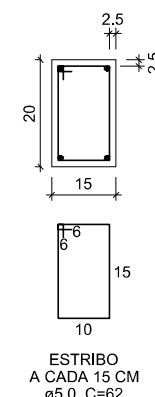
# SEÇÃO A-A



# PILARES DO MURO

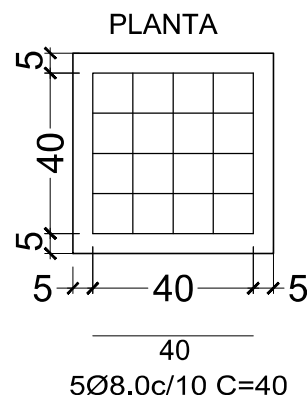


# SEÇÃO A-A

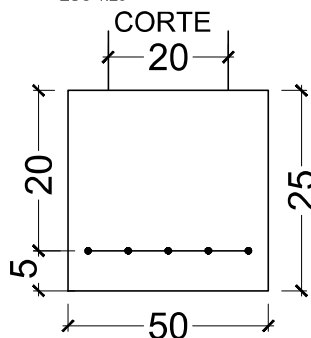


# SAPATAS (50x50)

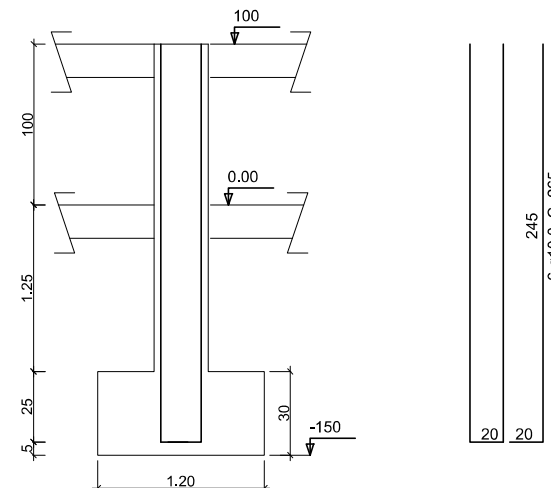
PLANTA Sem escala



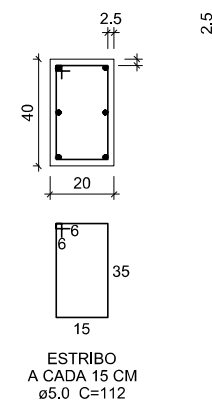
CORTE  
ESC 1:25



# PILARES ESTRUTURAIS DA ESTRUTURA METÁLICA

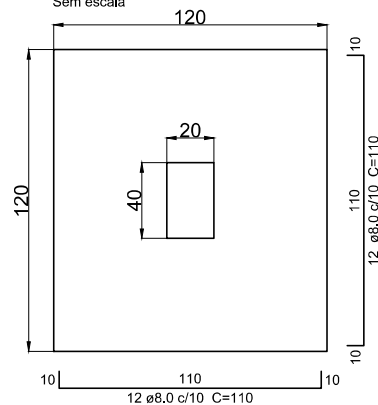


# SEÇÃO A-A

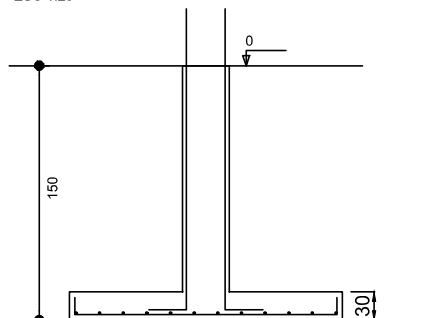


# SAPATAS (120x120)

PLANTA  
Sem escala



CORTE  
ESC 1:25



Conteúdo:	Projeto de Cobertura e Muro.		
Resp. Técnico:	Keverton Oliveira Silva, CREA-MG 224062/D		
Concedente:	Prefeitura Municipal de Divino, Mauri Ventura do Carmo		
Endereço:	Carangolinha, Bom Jesus, Divino-MG		
Escala: 1:100	Unidades: Centímetros	Data: 28/11/2022	Folha: 03/05